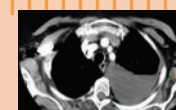




1910



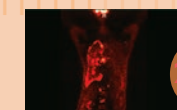
1930



1960



1990



2016

Sixth Annual
**Evaluation and Management of
Pleural Disease**
January 28-29, 2016
Baltimore, Maryland



DATED MATERIAL



Chevy Chase Bank Conference Center
and the
The Sheikh Zayed Tower
The Johns Hopkins Hospital
Minimally Invasive Surgical Training Center (MISTC Lab)
Baltimore, Maryland

This activity has been approved for AMA PRA Category 1 Credits™.

This conference has
been endorsed by the
American Thoracic Society.



**Evaluation and Management of
Pleural Disease**
Sixth Annual
January 28-29, 2016

Johns Hopkins University School of Medicine
Division of Interventional Pulmonology
Presents

Description

This activity is designed to educate the practicing pulmonologist and chest surgeon, as well as other health care professionals, interested in the care of patients with pleural disease. Participants will develop a comprehensive knowledge of the indications, contraindications and associated complications of common pleural procedures including thoracentesis, chest tube and indwelling pleural catheter placement, pleural biopsy and thoracoscopy. Procedures will be discussed in the didactic session on day one and will be demonstrated and practiced on day two at the hands-on stations on human cadavers in the MISTC Lab.

Who Should Attend

This activity is intended for pulmonologists and chest surgeons, physician assistants, as well as other health care professionals interested in the care of patients with pleural disease.

Objectives

After attending this activity, the participant will demonstrate the ability to:

- Interpret pleural pathophysiology.
- Discuss in detail the evaluation and management of patients with pleural effusion and pneumothorax.
- Use ultrasound to guide pleural intervention.

ACCREDITATION STATEMENT

The Johns Hopkins University School of Medicine is accredited by the Accreditation Council for Continuing Medical Education (ACCME) to provide continuing medical education for physicians.



CREDIT DESIGNATION STATEMENT

The Johns Hopkins University School of Medicine designates this live activity for a maximum of 12.0 AMA PRA Category 1 Credits™. Physicians should claim only the credit commensurate with the extent of their participation in the activity.

OTHER CREDIT

**American Academy of Nurse Practitioners
National Certification Program**

American Academy of Nurse Practitioners National Certification Program accepts AMA PRA Category 1 Credit™ from organizations accredited by the ACCME.

American Academy of Physician Assistants

American Academy of Physician Assistants (AAPA) accepts certificates of participation for educational activities certified for AMA PRA Category 1 Credit™ from organizations accredited by ACCME. Physician assistants may receive a maximum of 12.0 AAPA Category 1 CME credits for completing this program.

American Nurses Credentialing Center

American Nurses Credentialing Center (ANCC) accepts AMA PRA Category 1 Credit™ from organizations accredited by the ACCME.

Contact Hours for Non-Physicians

The Johns Hopkins University has approved this activity for 12.0 contact hours for non-physicians.

**POLICY ON SPEAKER AND PROVIDER
DISCLOSURE**

It is the policy of the Johns Hopkins University School of Medicine that the speaker and provider disclose real or apparent conflicts of interest relating to the topics of this educational activity, and also disclose discussions of unlabeled/unapproved uses of drugs or devices during their presentation(s). The Johns Hopkins University School of Medicine OCME has established policies in place that will identify and resolve all conflicts of interest prior to this educational activity. Detailed disclosure will be made in the activity handout materials.

To Register or For Further Information

Register Online (credit card and eCheck)
Register by Phone (credit card only)
Register by Fax
Confirmation/Certificates
General Information
E-mail the Office of CME

Follow us on Twitter: <http://twitter.com/HopkinsCME>
Facebook: <http://www.facebook.com/HopkinsCME>
Sponsoring Division Website: www.hopkinsmedicine.org/IP

For general information, the direct link for this CME activity web page is:
<http://www.hopkinscme.edu/CourseDetail.aspx/80037838>.

Speakers

ACTIVITY DIRECTOR

David Feller-Kopman, MD, FCCP
Associate Professor of Medicine
Director, Bronchoscopy and
Interventional Pulmonology

HOPKINS SPEAKERS

Hans Lee, MD
Assistant Professor of Medicine
Director, Pleural Disease Service

Andrew Lerner, MD
Assistant in Medicine

Roy Semaan, MD
Clinical Fellow in Pulmonary and Critical
Care Medicine

Stephen Yang, MD
Professor of Surgery and Oncology
The Arthur B. and Patricia B. Modell
Professor in Thoracic Surgery
Director, Thoracic Oncology Program
Chief, Thoracic Surgery

Lonny Yarmus, DO, FCCP
Assistant Professor of Medicine
Clinical Director, Division of Pulmonary and
Critical Care Medicine

GUEST SPEAKERS

Joseph Friedberg, MD
Charles Reid Edwards Professor of Surgery
University of Maryland School of Medicine
Thoracic Surgeon-In-Chief
University of Maryland Medical System
Baltimore, Maryland

Richard Light, MD
Professor of Medicine
Vanderbilt University Medical Center
Nashville, Tennessee

José Porcel, MD, FCCP, FACP
Professor of Medicine
Chief, Department of Internal Medicine
Arnau de Vilanova University Hospital
Barcelona, Spain
Head, Pleural Medicine Unit
Biomedical Research Institute
Lleida, Spain

www.HopkinsCME.edu
(410) 502-9636
(866) 510-7088
(410) 502-9636
(410) 955-2959
cmenet@jhmi.edu

Program

Thursday, January 28, 2016

Chevy Chase Bank Conference Center
The Sheikh Zayed Tower
The Johns Hopkins Hospital

7:45 - 8:30	Registration and Continental Breakfast
8:30 - 8:35	Welcome and Conference Goals David Feller-Kopman, MD, FCCP
8:35 - 9:00	Review of Pleural Anatomy and Physiology David Feller-Kopman, MD, FCCP
9:00 - 9:20	The Evaluation of Pleural Effusions: Does Light's Criteria Still Apply? Richard Light, MD
9:20 - 9:50	Ultrasound Guidance for Pleural Access Andrew Lerner, MD
9:50 - 10:05	Questions and Answers
10:05 - 10:25	Refreshment Break
10:25 - 10:45	Chest Tube Placement and Thoracentesis Pearls Hans Lee, MD
10:45 - 11:10	Medical Thoracoscopy Lonny Yarmus, DO, FCCP
11:10 - 11:50	VATS 101 Stephen Yang, MD
11:50 - 12:00	Questions and Answers
12:00 - 1:00	Lunch
1:00 - 1:30	Parapneumonic Effusion and Empyema José Porcel, MD, FCCP, FACP
1:30 - 2:00	Management of Malignant Pleural Effusions Roy Semaan, MD
2:00 - 2:25	Updates in Malignant Mesothelioma Joseph Friedberg, MD
2:25 - 2:40	Questions and Answers
2:40 - 3:00	Refreshment Break

3:00 - 3:25	Management of Unclear Exudates Lonny Yarmus, DO, FCCP
3:25 - 3:45	Management of Pneumothorax Richard Light, MD
3:45 - 4:05	Novel Insights into Pleural Biology José Porcel, MD, FCCP, FACP
4:05 - 4:20	Credentialing, Coding and Reimbursement Hans Lee, MD
4:20 - 4:30	Questions and Answers
4:30	Adjourn

Friday, January 29, 2016

Minimally Invasive Surgical Training Center (MISTC Lab)
Blalock Building, 12th Floor
The Johns Hopkins Hospital

8:30 - 3:00	Hands-On Stations* Instruction provided by all faculty
	Station A: Semi-rigid Thoracoscopy
	Station B: Rigid Thoracoscopy
	Station C: Tunneled Pleural Catheters
	Station D: Semi-rigid Thoracoscopy
	Station E: Tube Thoracostomy
	Station F: Intrabronchial Valve
	Station G: Tunneled Pleural Catheter / Tube Thoracostomy
	Station H: VATS
	Station I: Meet the Professor
	Station J: Ultrasound Simulator

*We will provide caps, masks, gloves and gowns for the lab. Participants are required to provide their own scrubs and proper footwear.

12:00 - 12:45	Lunch
3:00	Adjourn
	Please complete and return the Evaluation and Credit Report Forms. The Registration Desk will remain open during conference hours.

The Johns Hopkins University School of Medicine takes responsibility for the content, quality and scientific integrity of this CME activity. This schedule is subject to change.

General Information

REGISTRATION

Thursday, January 28, 2016 • 7:45 a.m. – 8:30 a.m.

LOCATION

Thursday, January 28, 2016
Chevy Chase Bank Conference Center
The Johns Hopkins Hospital
1800 Orleans Street
The Sheikh Zayed Tower, Main Level
Baltimore, Maryland 21287

Friday, January 29, 2016
Minimally Invasive Surgical Training Center (MISTC Lab)
The Johns Hopkins Hospital
1800 Orleans Street
Blalock Building, 12th Floor
Baltimore, Maryland 21287

The Johns Hopkins Hospital is located on Orleans Street (Route 40) between Broadway and Wolfe Streets. Directions and campus parking information are available on our website under the contact and travel section at www.HopkinsCME.edu. The closest public garage is the Orleans Street Garage, which is located across the skywalk from the main entrance to the hospital. Handicapped parking is also available in the Orleans Street Garage. Complimentary round-trip transportation for attendees staying at the conference headquarters hotel will be provided. *Johns Hopkins is smoke-free.*

FEES

REGISTRATION CUT-OFF DATE: JANUARY 22, 2016

Methods of Payment: Payment by check or credit card must accompany the registration form prior to the activity. On-site payments by credit card only. Foreign payments must be by credit card or with a U.S. Dollar World Money Order. The registration fee includes instructional materials, continental breakfasts, refreshment breaks and lunches.

Physicians – Full Two-day Course (with Lab)[†] \$1,095
Residents*/Fellows*/Nurses/Nurse Practitioners/Physician Assistants/Allied Health Professionals – Full Two-day Course (with Lab)[†]\$1,095
Physicians – Day One Lectures Only..... \$695
Nurses/Nurse Practitioners/Physician Assistants/Allied Health Professionals – Day One Lectures Only \$695
Residents*/Fellows* – Day One Lectures Only.... \$495
Printed Syllabus (Optional B/W).....\$45

[†]Limit to 30 participants for Lab *with verification of status

You will receive a confirmation by e-mail if you have provided your e-mail address. Otherwise confirmation will be sent by mail. If you have not received it by January 22, 2016, call (410) 502-9634 to confirm that you are registered. A certificate of attendance will be sent by March 14, 2016 to the e-mail address you provide on the registration form.

The Johns Hopkins University reserves the right to cancel or postpone any activity due to unforeseen circumstances. In this event, the University will refund the registration fee but is not responsible for travel expenses. Additionally, we reserve the right to change the venue to a comparable venue. Under such circumstances registrants will be notified as soon as possible.

General Information

LATE FEE AND REFUND POLICY

A \$50 late fee applies to registrations received after 5:00 p.m. ET on January 22, 2016. A handling fee of \$50 will be deducted for cancellation. An additional fee may apply for cancellation of other events, including workshops and social activities. Refund requests must be received by fax or mail by January 22, 2016. No refunds will be made thereafter. Transfer of registration to another Johns Hopkins conference in lieu of cancellation is not possible.

SYLLABUS

All registrants will receive a flash drive with the slides and paper for note-taking. This is included in the cost of your registration. A link to the syllabus will be provided via email shortly before the activity begins if you prefer to study or print the syllabus. A printed copy may be ordered at the time of registration for an additional fee of \$45. The printed copy will be provided during activity registration. Cancellations or refunds for the printed copy will not be permitted.

HOTEL AND TRAVEL INFORMATION

We strongly encourage you to book your accommodations at the Renaissance Harborplace Hotel, which is the conference headquarters hotel. The Johns Hopkins Office of CME makes every effort to secure the best rate for overnight accommodations. The rate is part of a negotiated conference package that incorporates many services. By staying at the host hotel and booking within the room block, you help us maintain current conference benefits and keep future registration fees reasonable. Please consider this when making your overnight accommodations decision.

Renaissance Harborplace Hotel

202 East Pratt Street (410) 547-1200
Baltimore, Maryland 21202 (877) 212-5752
FAX: (410) 539-5780

Web Site: www.renaissancehotels.com

HOTEL RESERVATION CUT-OFF DATE: JANUARY 7, 2016

A limited block of sleeping rooms has been reserved for your convenience and will be available on a first come, first served basis. The Renaissance Harborplace Hotel is part of the waterfront complex of Harborplace, and only steps away from the many attractions of Baltimore's Inner Harbor. Make your reservation online at <https://aws.passkey.com/event/14285043/owner/297/home> or call the hotel directly and specify that you are attending the Johns Hopkins Pleural Disease conference to receive the special group rate of \$155, single or double, plus tax. Complimentary roundtrip transportation will be provided. On-site parking is available at the hotel at an additional charge. Check-in time is 4:00 p.m. Check-out time is 12:00 p.m.

EVALUATION

A form will be available to attendees to evaluate each session and each speaker's presentation, as well as to identify future educational needs.

OUTCOMES SURVEY

A survey will be sent to all physician attendees within three months post activity to assist us in determining what impact this activity had on the attendee's practice.

EMERGENCY CALLS

On January 28, 2016, direct emergency calls to the Hopkins CME Office, (410) 955-2959. On January 29, 2016, direct emergency calls to the MISTC Lab, (443) 287-2334. Messages will be posted for participants.

AMERICANS WITH DISABILITIES ACT

The Johns Hopkins University School of Medicine fully complies with the legal requirements of the ADA and the rules and regulations thereof. *Please notify us if you have any special needs.*

ACKNOWLEDGEMENT

Applications for commercial support from health care related industries are pending. A complete list of contributors will be provided in the syllabus. Please note that commercial support received is solely for the educational component of the activity and will not be used to provide food and beverage.

Please note: The Physician Payments Sunshine Act was enacted by Congress to increase public awareness of financial relationships between drug and medical device manufacturers and physicians. In compliance with the requirements of this Act, the commercial supporter/s of this activity may require the Johns Hopkins University School of Medicine to report certain professional information (such as name, address, National Provider Identifier (NPI), and State License number) of physician attendees who receive complimentary food and beverage in conjunction with a CME activity. The commercial supporter is required to submit the collected data to the Centers for Medicare and Medicaid Services which will then publish the data on its website.

Registration Form

Sixth Annual Evaluation and Management of Pleural Disease

Course Number 80037838

January 28-29, 2016

To Register: Online (credit card and eCheck): www.HopkinsCME.edu

By fax: (866) 510-7088 **By phone** (credit card only): (410) 502-9636

Or mail this form to the Johns Hopkins University, Office of Continuing Medical Education, P.O. Box 64128, Baltimore, Maryland 21264-4128. Include check payable to **HOPKINS/80037838**, or include credit card information below.

PAYMENT MUST ACCOMPANY FORM TO CONFIRM YOUR REGISTRATION.

I am a Johns Hopkins speaker for this activity.

Please type or print clearly:			
last name	first name	m.i.	
highest degree	primary specialty	Hopkins faculty/staff only JHED ID	
For Physicians Only:	NPI – 10 digits	State License #	State of License
mailing address			
city	state	ZIP	country
daytime telephone		fax number	
e-mail			

You will receive a confirmation notice and your attendance certificate by e-mail if you provide your e-mail address.

Check here if you wish to receive e-mail notices about upcoming CME activities.
 I plan to stay at the Renaissance Harborplace Hotel.

What do you hope to learn by attending this activity? _____

Please notify us if you have any special needs. _____

Total amount enclosed \$ _____

Payment Type:

JHU Faculty/Staff Only: If you are using your Tuition Remission Benefit or an ION budget, please complete this registration form and return with appropriate payment processing form to OCME, Turner 20.

Forms can be found on-line at <http://www.hopkinscme.edu/Resources/resources.aspx>.

Check (See instructions on top of form.)
 Credit Card: VISA MASTERCARD DISCOVER AMEX

Card # _____ - _____ - _____ - _____ Exp. Date _____

Name on Card

Signature and Date